



RJ45  
RJ Industrial

## HARTING RJ Industrial® 10G RJ45 bulkhead

### Advantages

- Compact and robust design
- 360° shielding
- Compatible with HIFF dimensions for use in:
  - Han® 3 A series
  - HARTING PushPull (V4)
  - Han® PushPull (V14)
  - *har*-port
 Details see page 01.11
- Suitable for PoE (IEEE 802.3af) and PoE+ (IEEE 802.3at)

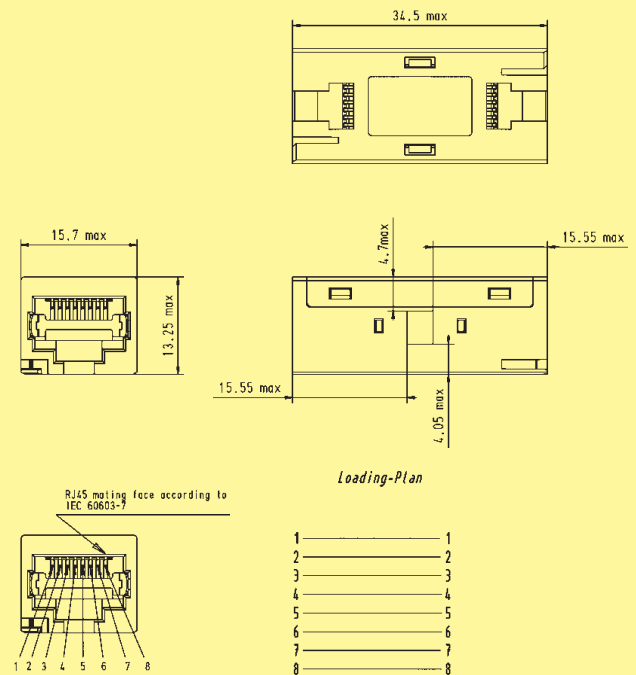
### Technical characteristics

Mating face	RJ45 acc. to IEC 60 603-7
Number of contacts	8
Transmission category	Cat. 6, performance class E <sub>A</sub> , suitable for 1/10 Gigabit Ethernet
Degree of protection	IP 20
Mating cycles	min. 750
Temperature range	–40 °C ... +70 °C
Housing material	Zinc die-cast, nickel-plated
Flammability acc. to UL 94	V0

Identification	Part No.	Drawing	Dimensions in mm
----------------	----------	---------	------------------

HARTING RJ Industrial® 10G  
RJ45 bulkhead

09 45 545 1560





Ha-VIS preLink® RJ45 jack

## Advantages

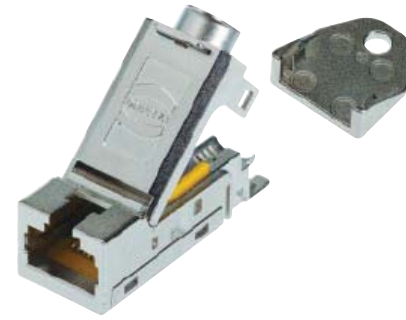
- Compact and robust design
- 360° shielding
- Compatible with HIFF dimensions for use in:
  - Han® 3 A series
  - HARTING PushPull (V4)
  - Han® PushPull (V14)
  - *har*-port
 Details see page 01.11
- Suitable for PoE (IEEE 802.3af) and PoE+ (IEEE 802.3at)

## Technical characteristics

Mating face	RJ45 acc. to IEC 60 603-7
Number of contacts	8
Transmission category	Cat. 6, performance class E <sub>A</sub> , suitable for 1/10 Gigabit Ethernet
Connectable cables	
- Conductor cross section	AWG 22 - AWG 24 solid and stranded (0.25 - 0.34 mm <sup>2</sup> )
- Cable diameter	5 - 9 mm
- Conductor diameter	1.3 - 1.6 mm
Degree of protection	IP 20
Mating cycles	min. 750
Temperature range	-40 °C ... +70 °C
Housing material	Zinc die-cast, nickel-plated

Identification	Part No.	Drawing	Dimensions in mm
<b>Ha-VIS preLink® set RJ45 jack</b> consists of: <ul style="list-style-type: none"> <li>• 1x RJ45 module</li> <li>• 1x terminal module</li> <li>• 1x cable tie</li> </ul>	AWG 22/23 20 82 001 0001 AWG 26/27 20 82 001 0002		
Ha-VIS preLink® RJ45 jack module	20 82 000 0002		
Ha-VIS preLink® RJ45 terminal module AWG 22/23, yellow <sup>1)</sup> AWG 26/27, white <sup>1)</sup>	20 82 000 0001 20 82 000 0003		
Ha-VIS preLink® protection cover	20 82 000 9915		
Ha-VIS preLink® unlocking tool	20 82 000 9916		
Ha-VIS preLink® assembly tool	20 82 000 9901		

<sup>1)</sup> Packaging with 10 pieces



## HARTING RJ Industrial® cable jack

### Advantages

- Compact and robust design
- 360° shielding
- Category of transmission Cat. 6
- Suitable for solid and stranded wires
- Field-assembly with *HARAX*® quick termination in IDC technology
- Compatible with HIFF dimensions for use in:
  - Han® 3 A series with HIFF adapter 09 45 515 0024
  - HARTING PushPull (V4)
    - Compact bulkhead mounting housing 09 45 545 0028
    - EasyInstall bulkhead mounting housing 09 45 545 0032
  - Han® PushPull (V14)
    - Panel feed-through plastic 09 35 012 0331
    - Panel feed-through metal rectangular 09 35 012 0311
    - Panel feed-through metal circular 09 35 012 0312
  - *har-port* 09 45 452 0000
- Suitable for PoE (IEEE 802.3af) and PoE+ (IEEE 802.3at)

### Technical characteristics

Connector type	RJ45 connector acc. to IEC 60 603-7
Number of contacts	8
Transmission category	Category 6, class E <sub>A</sub> , suitable for 1/10 Gigabit Ethernet
Transmission performance	Category 6 / Class E <sub>A</sub> up to 500 MHz acc. to ISO/IEC 11 801:2002, EN 50 173-1
Transmission rate	10/100 Mbit/s and 1/10 Gbit/s
Shielding	fully shielded, 360° shielding contact
Mounting	Field-assembly
Cable termination	with IDC-contacts, without tools
Connectable cables	
- Conductor cross section	AWG 27 ... AWG 24 (solid/stranded) <sup>1)</sup>
- Conductor diameter	AWG 24 ... AWG 22 (solid/stranded) <sup>2)</sup>
- Cable diameter	max. 1.6 mm (incl. insulation) 5 ... 9 mm
Mating cycles	min. 750
Degree of protection	IP 20
Temperature range	-40 °C ... +70 °C
Housing material	Zinc die-cast, nickel-plated

Identification	Part No.	Drawing	Dimensions in mm
HARTING RJ Industrial® 10G cable jack, 8-poles			
AWG 28 ... 24	09 45 545 1561		
AWG 24 ... 22	09 45 545 1562		
HARTING RJ Industrial® PN cable jack, 4-poles, Cat. 5			
AWG 24 ... 22	09 45 545 1120		
Unlocking tool for opening of the HARTING RJ Industrial® cable jacks	20 82 000 9916		

<sup>1)</sup> For part number 09 45 545 1561

<sup>2)</sup> For part number 09 45 545 1562 and 09 45 545 1120



## HARTING RJ Industrial® 10G connector set RJ45, 8-poles

### Advantages

- RJ45 Ethernet-Data connector suitable for industry
- Field-assembly with *HARAX*® quick termination in IDC technology
- Compact design
- Ergonomically unlocking clip
- Less weight assures shock- and vibration resisting connection
- Category of transmission Cat. 6
- Suitable for solid and stranded wires
- Suitable for PoE (IEEE 802.3af) and PoE+ (IEEE 802.3at)

### Technical characteristics

Connector type	RJ45 connector acc. to IEC 60 603-7
Number of contacts	8
Transmission category	Category 6, class E <sub>A</sub> , suitable for 1/10 Gigabit Ethernet
Transmission performance	Category 6 / Class E <sub>A</sub> up to 500 MHz acc. to ISO/IEC 11 801:2002, EN 50 173-1
Transmission rate	10/100 Mbit/s and 1/10 Gbit/s
Shielding	fully shielded, 360° shielding contact
Mounting	Field-assembly
Cable termination	with IDC-contacts, without tools
Connectable cables	
- Conductor cross section	AWG 27 ... AWG 22 (solid / stranded)
- Conductor diameter	max. 1.6 mm (incl. insulation)
- Cable diameter	4.5 ... 9 mm (straight version) 4.5 up to 8 mm (45° angled version)
Mating cycles	min. 750
Degree of protection	IP 20
Temperature range	-40 °C ... +70 °C
Housing material	Polyamide, UL 94-V0
Colour	black

Identification	Part No.	Drawing	Dimensions in mm
HARTING RJ Industrial® 10G connector set RJ45, 8-poles			
straight version	09 45 151 1560 09 45 151 1560 XL <sup>1)</sup>		
45° angled version (four different cable outlets possible)	09 45 151 1561		

Identification	Colour	Part No.
Colour clips for colour coding the HARTING RJ Industrial® 10G connector	White	09 45 850 0001
	Grey	09 45 850 0002
	Yellow	09 45 850 0003
	Magenta	09 45 850 0005
	Red	09 45 850 0007
	Blue	09 45 850 0008
	Green	09 45 850 0009
	Brown	09 45 850 0010

<sup>1)</sup> Packaging with 100 sets